



**HAWAI'I P-20**  
Partnerships for Education



# **Hawai'i P-20 Strategic Plan**

## **2022 - 2025**

---



# Table of Contents

**02**

Mission and Vision

**03**

Guiding Principles

**04**

Early Childhood and Elementary

**05**

Postsecondary Readiness and Success

**06**

Career Pathways

**07**

Education to Workforce Data

**08**

Measures of Success



# Mission

Hawai'i P-20 Partnerships for Education strengthens the education pipeline from early childhood through postsecondary education and training with data-informed decision making, advocacy, policy coordination, and collaborative action. Our work is focused on high expectations and equitable access, so all students can thrive in school, career, and life.



# Vision

We envision a Hawai'i where students from all backgrounds across our state have equitable access to rigorous, clear, and meaningful educational pathways that empower them to meet their education and career goals.



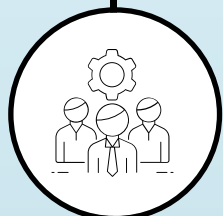
We aspire to have the educational systems in Hawai'i fully aligned with the state's current and future workforce needs. But pathways are not enough; students need to be academically prepared. This requires increased opportunities for early education, as well as, a strong academic and intellectual foundation for every student throughout the state. To this end, the Hawai'i P-20 Council approved an aspirational attainment goal for the state: "Hawai'i's Graduates for Hawai'i's Future." This goal will guide our work, and we hope the work of our partners for years to come.

# Guiding Principles

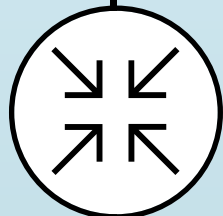
At Hawai'i P-20 Partnerships for Education, we strive to adhere to the following principles that guide us in all aspects of our work.



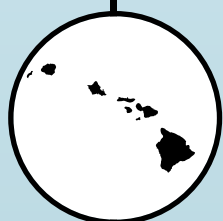
Every student has a strong academic and intellectual foundation from early education to postsecondary.



Academic readiness at all levels of the educational pipeline is essential to ensuring that students are prepared to enter their chosen careers.



Educational systems in Hawai'i should be aligned with the state's current and future workforce needs.



Place-based and culture-based education are crucial to providing robust and relevant experiences for the success of all learners.



Rigorous and relevant outcome measures will inform the state of equity gaps and help target supports and interventions that benefit our at-risk and underrepresented populations.

# Early Childhood and Elementary



We believe that an intentional alignment and coordination of the early childhood (prenatal to age 10) system that ensures seamless transition experiences for children, families, and educators will lead to better attendance rates, increased family-school connection, enhanced social skills, and higher academic performance. This will lead to on-time grade-level promotion, on-time high school and postsecondary graduation, and ultimately lead to living-wage earnings and a thriving community. To provide all children with access to seamless transition opportunities in early learning and elementary school, we will:

## **Facilitate the creation of seamless pathways for children throughout the educational pipeline from birth to grade 5**

- Foster a team among school principals and Early Care and Education (ECE) directors to develop and implement community-based transition plans
- Engage in setting shared professional learning and expectations among preK to grade 5 (P-5) educators to support transition
- Support families' capacity to engage and access transition support services for their children

## **Lead the development of policies, practices, and resources that ensure alignment among educational partners**

- Expand the collaborative engagement of the cross-sector transition support team
- Develop a shared vision of seamless transition across and within the educational pipeline from birth to grade 5
- Strengthen public awareness of the importance of support for seamless transition

## **Advocate for the recruitment and retention of early childhood educators**

- Identify and promote an equitable access and availability of early college and apprenticeship program for early childhood workforce
- Support the professionalization of the early childhood workforce in partnership with Hawai'i Careers for Young Children (inclusive of all UH campuses and Chaminade University)

## **Facilitate the appropriate use of data and support data systems to (1) identify and address equity and access and (2) improve program services and outcomes**

- Promote the use of child outcomes data to better understand program effectiveness and efficacy
- Establish data sharing and data governance infrastructure to support the implementation of Act 46 of 2020 and Act 210 of 2021
- Support the creation of mechanism to improve the implementation of KEA (including teacher training) and evaluation of KEA data to inform/improve instructional practices

# Postsecondary Readiness and Success



The COVID-19 pandemic has greatly disrupted student learning and created uncertainty about the future. We believe by connecting students' aspirations to academic preparation and reconnecting them with their schools and postsecondary campuses will reignite their passion for learning and their future. We also believe that a strong family and community support system will help ease the anxiety students have for their future. To support all students with access to opportunities to help them reach their future aspirations, we will:

## **Reconnect students to their schools and University of Hawai'i campuses**

- Utilize out-of-school and summer programs to focus on college readiness
- Improve students' transition between high school and college campuses through summer advising and orientation support

## **Improve academic readiness necessary for students' chosen pathway**

- Focus on college readiness related to students' interest, chosen programs of study (pathway) and college aspirations
- Facilitate discussion among the State of Hawai'i Department of Education (HIDOE), University of Hawai'i (UH), and other stakeholders to improve math achievement, with particular focus on the math preparation necessary for different career pathways.

## **Strengthen family and community engagement**

- Develop a continuum of family engagement strategies
- Provide professional development opportunities to school administrators to actively deploy these strategies

## **Develop infrastructure for career exploration from middle to high school and pathway alignment**

- Connect academic preparation to career pathways through industry speakers and exploration
- Connect middle school career exploration to high school options and postsecondary programs of study
- Provide opportunities for career exploration through career fairs for middle and high school students

# Career Pathways



We believe college and career pathways expand economic opportunity while preparing students for career and life success. Completing a high-quality college and career pathway improves academic achievement and increases the likelihood of graduating high school, being prepared for college-level coursework, developing employability skills and securing a living wage job. To help students to navigate the complex array of postsecondary and training options they face, we will:

## **Align career pathways**

- Develop state career pathways that clearly connect secondary, postsecondary and careers with a specific emphasis on Hawai'i workforce needs
- Administration of the Hawai'i State Perkins V grant to transform current CTE pathways into programs of study that are economically viable for the future workforce of Hawai'i.
- Braiding academic, legislative, and industry stakeholders to ensure resources are appropriately allocated for the successful implementation of College and Career Pathways

## **Expand early college opportunities**

- Systematize processes and strengthen the focus of the Early College Program on increasing the participation of students from underrepresented populations
- Align and coordinate Early College opportunities to career pathways that connect HIDOE pathways and programs of study to UH CTE programs
- Lead the development of policies, practices, and resources that remove barriers to entry, support student success, and improve the focus on and participation of underrepresented populations.
- Lead and convene the Early College Taskforce and UH Early College Committee

## **Support a statewide network for quality work-based learning**

- Ensure work-based learning experiences are provided to all learners and afforded the knowledge, skills, and competencies to fully participate in, contribute to, and benefit from Hawai'i's economy and our communities.
- Formally integrate WBL intermediaries into State and regional WBL infrastructure for all Hawai'i public high schools.
- Support equitable access and outcomes of WBL through regional data collection and improvement processes

## **Collaborate to create a strategic direction for college and career counseling and advising**

- Connect academic preparation to career pathways through industry speakers and exploration
- Implement a Statewide HIDOE College, Career, and Community Framework to prepare and transition all students towards a successful post-high school future.
- Design sustainable statewide professional development opportunities for counselors and educators.



# Education to Workforce Data



Hawai'i P-20 will continue to manage the P20W statewide longitudinal data system connecting pre-K to workforce experiences that inform policy- and decision-making to improve the preparation of Hawai'i's graduates to meet their academic and career goals. To provide data necessary to inform and drive systematic decisions, we will:

**Continue to develop and work with our stakeholders to co-create reports, web metrics, and other data visualizations that concisely inform the state on the progress and outcomes of underserved populations in achieving equitable academic and workforce outcomes.**

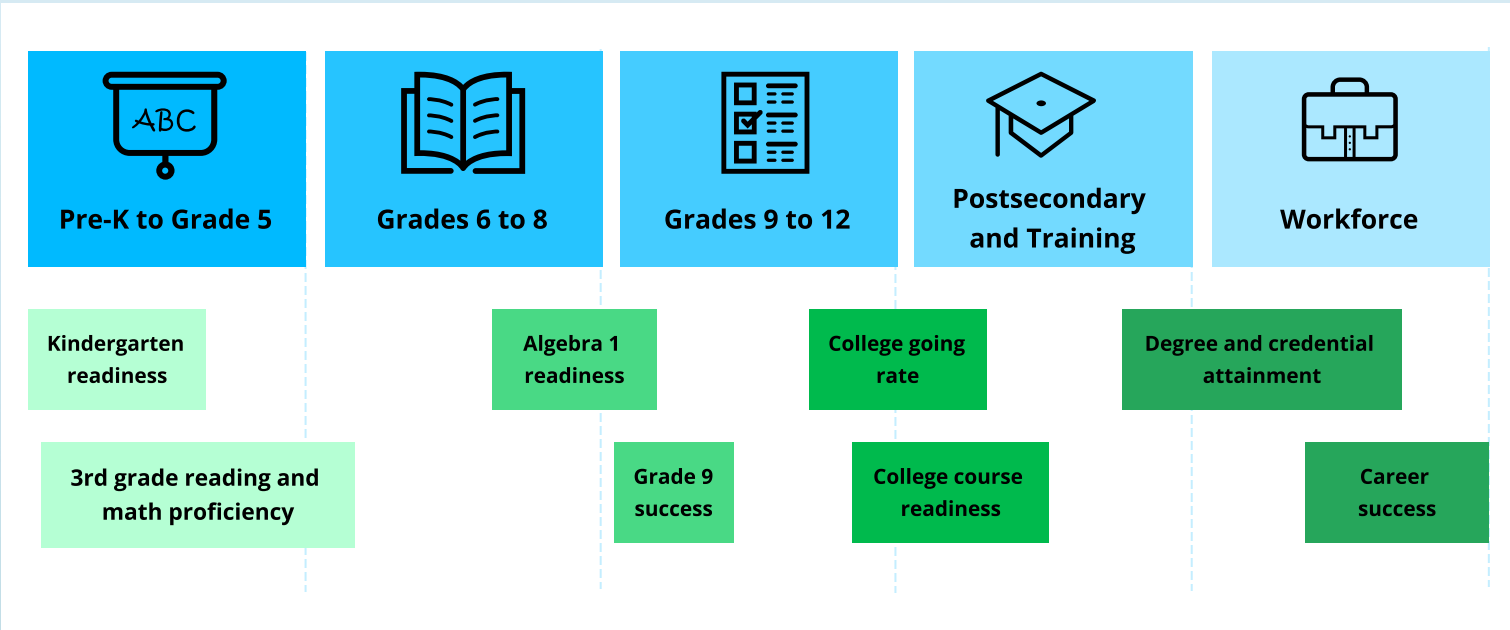
- Support P-20 programs and information needs in their use of cross-sector data to support P-20's stakeholders in planning and evaluating program activities and program outcomes.
- Document and publicize P-20 examples of the use of cross-sector linked data to promote the importance of equitable outcomes and achievements of Hawai'i's vulnerable student populations.

**Strengthen and maintain the DXP's governance and technical infrastructure to ensure partners' continued trust and confidence in P-20's management.**

- Identify and complete new data sharing agreements to include new sources of state agency data that will expand DXP's capacity to address the state's pressing information needs.
- Continue to improve the transparency of DXP policies and processes that will facilitate and support our partners' advocacy for the DXP.
- Technically upgrade and expand the data warehouse to efficiently store and access new data sources.
- Continue to manage the documentation of source data processing and programming to ensure the sustainability of the DXP's data system.

# Measures of Success

Hawai'i P-20 will continue to monitor our progress towards achieving these strategic goals in each focus area through, but not limited to, these measures of success throughout the education to workforce pipeline.







# HAWAI'I P-20

Partnerships for Education



[www.hawaiip20.org](http://www.hawaiip20.org)



[p20hi@hawaii.edu](mailto:p20hi@hawaii.edu)