

## Wondering about next steps after graduation?



students identify or achieve their post-high school ambitions and make it easier to do so with guidance and encouragement. The initiative included several components:

### 1. Hawai'i P-20 Summer Advising Initiative:

Over 1,700 graduating high school seniors were connected with 25 advisors who provided coaching, “nudging” and advising for students, to help them make informed decisions about the critical steps towards achieving their post-high plans. Advisors guided students through their summer transition towards college or career, including nudging messages sent via a texting campaign, built upon a pilot texting program that Hawai'i P-20 implemented during the school year. Support consisted of specialized text messages, relevant resources and opportunities to receive one-on-one support from a dedicated advisor over the eight weeks of summer.

### 2. UHCC Summer Onramp Program:

Over 1,490 graduates were provided free online “Next Step Career Exploration” classes through the University of Hawai'i Community Colleges. 121 classes were offered by seven community colleges with the aim to give students the opportunity to explore career options and discover the education and training needed to reach their goals. As a result of this transition project, 75% of participants registered for Fall classes at a University of Hawai'i campus as of August 2020.

### 3. Stronger Together Scholarship:

The Hawai'i Community Foundation and First Hawaiian Bank Foundation created a \$2 million “[Stronger Together](#)” scholarship fund for students who participated in the Next Steps to Your Future program. 370 students were awarded scholarships averaging \$6,200 to help with their college expenses.

*“We know that our graduating seniors have persevered in the face of adversity and that many of their plans were disrupted because of the shutdown of schools,” said Stephen Schatz, executive director, Hawai'i P-20. “Our Next Steps initiative was to make sure students had options after they graduated and received the necessary advising to help make their college dreams a reality and transition them to their futures.”*

## “Next Steps to Your Future” Supports Class of 2020 in their Transition to College and Career

Over 60,000 text messages were exchanged between Class of 2020 graduates and their advisors and counselors over the summer in [Next Steps to Your Future](#), a program designed to provide graduates with guidance, resources and support in their transition from high school to college or career. Due to COVID-19, this year's graduating class faced a number of challenges, including the early closure of schools and the upending of support services to help them navigate the important period that bridges high school to the future.

To provide these students with support, Hawai'i P-20, the University of Hawai'i Community Colleges and community partners quickly came together to create an intervention program called Next Steps to Your Future, which teamed educators, counselors and advisors with over 1,700 participating graduates over eight weeks during the summer. The goal of Next Steps was to help


### NEXT STEPS to YOUR FUTURE

Hi, I'm Mrs. Candy Davis! I'm here to support you with your plans! I will:

- ☒ Send weekly texts w/ important tips & info
- ☒ Respond to your questions & connect you to resources
- ☒ Provide 1-1 support over phone or computer

I'll respond ASAP on weekdays 9am-3pm. I may take 1-2 days on weekends to get back to you :-)

To learn more: [P20Hawaii.org/NextSteps](https://P20Hawaii.org/NextSteps)




Aloha Lesli!! I'm Mrs. Davis from the Next Steps Campaign! You indicated you're not sure about your plans for this fall. Want to discuss your options with me this week?

## Program Outcomes

### NSF Advising

**1,700+**

Class of 2020 graduates

**39,145**

text messages sent to students (starting June 1)

**20,214**

text messages sent by students in response

**55.9%**

engagement rate

### NSF UHCC Classe

**1,496**

Students completed a course (1-6 credits)


**4,185**


UHCC credits were earned


**121**

UHCC Classes were offered to students

# YearEndReport 2019–2020

**HAWAI'I P-20**  
Partnerships for Education  
*Spark. Transform. Excel.*

I'm looking for... 


Contact Us 

[Hawai'i P-20 Initiatives](#) [Education Data](#) [Resources](#) [Events](#) [News](#) [About Us](#)

## Supporting Class of 2020 Grads in their Next Steps

This summer Hawai'i P-20, together with community partners, supported this year's Hawai'i's Class of 2020 public high school graduates in planning for their future.

[Discover The Outcomes !\[\]\(331831374f10e8c7fe483c7fa2c6e388\_img.jpg\)](#)



## Hawai'i P-20 Website is Updated!

Visit our recently updated website at [www.hawaiip20.org](http://www.hawaiip20.org)

## HAWAI'I STATEWIDE LITERACY PLAN RELEASED

A statewide literacy plan aimed to coordinate Hawai'i's efforts to build knowledge of best practices and improve learning opportunities for students of all ages and abilities was recently released by Hawai'i P-20. Designed in partnership with the Executive Office on Early Learning, the Hawai'i State Department of Education, the University of Hawai'i System and numerous community organization, the [Hawai'i State Literacy Plan](#) represents contributions from experts in 59 education organizations and institutions. The Plan is based on the belief that everyone has the right to be literate, and that attaining literacy is a shared responsibility best accomplished when organizations marshal their collective efforts toward a shared goal.

While Hawai'i has made some progress in increasing access to high-quality experiences supporting literacy, one in six adults in our state struggles with reading and writing, and nearly half of Hawai'i's public school third graders do not meet English Language Arts achievement standards on the annual statewide assessment. By raising literacy rates, the aspiration is to cultivate engaged and participating community members to improve literacy and create a stronger Hawai'i.



## FREE APPLICATION FOR FEDERAL STUDENT AID (FAFSA) COMPLETIONS RISE IN HAWAI'I, DESPITE COVID-19

**NEED HELP  
COMPLETING THE  
FAFSA?**

**EMAIL: [FAFSA@HAWAII.EDU](mailto:FAFSA@HAWAII.EDU)**

While all other states in the nation reported fewer FAFSA completions in the 2019-20 school year compared with the previous year, Hawai'i is currently the only state to increase the number of FAFSA completions. The increase is significant because of the circumstances students faced this year due to the impact of COVID-19.

With the closure of Hawai'i's public schools in March 2020, Hawai'i P-20 reacted quickly to move in-person programs that help students complete the FAFSA to virtual support strategies, ensuring students receive help completing the Free Application for Federal Student Aid (FAFSA) at the start of the COVID pandemic.

Data shows that seniors who complete the FAFSA, especially economically disadvantaged students, are more likely to enroll in

# YearEndReport 2019–2020

postsecondary education. With students not being in schools and having limited access to their college counselors for one-on-one support, FAFSA completion strategies were implemented that could assist students even while they were at home.

Hawai'i P-20 provided technical expertise and support for students and families through an email hotline: [FAFSA@Hawaii.edu](mailto:FAFSA@Hawaii.edu) that was supported by local financial aid specialists. This hotline was promoted through a statewide media campaign to encourage FAFSA completion including a [television PSA](#), radio and digital campaign. Hawai'i P-20 also created a comprehensive list of financial aid [online resources](#) that could serve as an information portal for educators and families.

Hawai'i P-20 also collaborated with Chamber of Commerce Hawai'i to offer a virtual webinar for families on how to pay for college during COVID 19. This webinar provided valuable guidance and insight on how college can be affordable even during this crisis. By partnering with our community, Hawai'i P-20 was able to help spread the word and reach a much broader audience. Hawai'i P-20 also continued to offer FAFSA webinars for new and continuing college students throughout the summer to make sure they knew it was not too late to submit the FAFSA.

Finally, through the *Next Steps to Your Future* initiative, Class of 2020 graduates received dedicated support to help complete their FAFSA applications over the summer through text messaging and one-on-one advising.

These combined efforts throughout the Spring and Summer yielded positive results in Hawai'i's end of year FAFSA completion numbers, proving that interventions implemented over the summer had a huge impact on ensuring more of our high school graduates completed the FAFSA.

## EARLY LITERACY PROJECT LAUNCHES

In partnership with the Hawai'i State Department of Education (HIDOE), Hawai'i P-20 is managing the early literacy component of the federal [Comprehensive Literacy State Development](#) (CLSD) grant for our youngest learners, from birth through kindergarten entry. The CLSD Early Literacy Project provides additional support for early childhood programs to enhance their curricula to develop and implement evidence-based, early literacy strategies to support our young children, with an emphasis on supporting the most disadvantaged children, in building their foundational skills before entering kindergarten. The Early Literacy Project will award between five to seven private and public early childhood programs and service providers up to \$1.4 million for four years, from October 2020 to June 2024. The award offers supplemental funds for literacy-focused supplies and materials, teacher training and coaching, and family literacy activities. A selection process has begun with the release of Request for Application in April 2020. An award notification and early literacy work will commence in October 2020.

## HAWAI'I P-20'S FIRST LARGE-SCALE VIRTUAL SUMMIT FEATURES NATIONAL AND LOCAL SPEAKERS

On September 9th & 10th, Hawai'i P-20 hosted the virtual summit, **College, Career, & Community Readiness Summit: Strengthening Student Supports To Create a Seamless Pathway**. As Hawai'i P-20's first large virtual summit, the focus was on bringing educational and community partners together to learn and share about national and local best practices around comprehensive student supports that prepare students to be college, career, and community ready. As schools and campuses transform in response to COVID-19, sessions were customized to highlight practices that strengthen the critical transition points along pathways across grades 6-16 that are evolving to promote equity, and prepare students to excel in school, career, and life.

## HAWAI'I BUSINESSES PARTICIPATE IN IDENTIFYING PROMISING CREDENTIALS

[Promising Credentials](#) is a project aimed at identifying high value certificates and credentials, as determined by industry using Hawai'i labor market data and local employer insights. The project, which kicked off in March of this year, will yield an industry-validated list of quality non-degree credentials that can then be used to inform school design, CTE programs of study, and career pathways. To gain insight and identify the promising occupations and credentials, 126 businesses participated in surveys and focus groups conducted by SMS Research, working with the national expert Education Strategy Group. In a three-step process, 275 occupations and 142 credentials were identified as promising. The project is a collaboration between Hawai'i P-20, Chamber of Commerce Hawai'i, Kamehameha Schools and Harold K.L. Castle Foundation. The list and report will be available in mid-October.



Stephanie Malia Krauss

# YearEndReport 2019–2020

The event featured plenary speaker Stephanie Malia Krauss of JFF, a national nonprofit that works on the alignment and transformation of the workforce and education systems to ensure access to economic advancement for all. Stephanie is a senior director at JFF and author of *Making It: What Today's Kids Need for Tomorrow's World*. At JFF, Stephanie helps leaders design solutions that improve the economic well-being of young people and families—especially those living in poverty. Stephanie is a social worker and educator who has been a nonprofit leader, school leader, and classroom teacher.

Stephanie's topic, *The Art of Currency-Building: How to Prioritize Youth Readiness and Well-Being in the Midst of a Pandemic* focused on the rapidly changing world and what young people need to be ready for the future of college, work, and adult life.

## STATEWIDE CAREER PATHWAYS SUMMIT SPOTLIGHTS EQUITY, INNOVATION AND PARTNERSHIPS

A statewide convening focused on equity, innovation, and partnerships brought together over 300 HIDOE middle and high schools, charter schools, University of Hawai'i campuses, and industry and community partners who play a critical role along a students' career pathway in February 2020. The event highlighted the great work happening both here in Hawai'i as well as across the nation. Some of the presentations included: *The Future Can't Wait: Why College and Career Pathways are Critical Amidst the Changing Nature of Work*, *Creating a Collaborative Community & Family Engagement Process to Support 6-16 Transitions and Bridging the Education – Industry Divide*. Sharing best practices will continue to increase alignment, integration and consistent coordination will ensure a clear and coherent path for students to see and move towards their futures and increase opportunities to thrive in college, career, and within our Hawai'i community. The 2021 Pathways Summit is scheduled for February 18 & 19.



## UNIVERSITY OF HAWAII COLLEGE PROGRAM FAIR REACHES OVER 700 STUDENTS

Hawai'i P-20 hosted the first virtual University of Hawai'i College Program Fair on June 22-24, 2020. Over the course of three days, the fair hosted 38 programs from campuses across the UH system, with 107 presenters, and over 700 viewers. Students were able to explore programs offered in a range of disciplines, from accounting, engineering, health sciences, natural resources, visual arts and much, much more. Recordings of the sessions and additional program resources can be found at: <http://collegeiswithinreachhawaii.com/uhiprogramfair/>

## HAWAII VIRTUAL FRESHMAN CAREER EXPO: OCTOBER 26 – NOVEMBER 6, 2020

The Virtual Freshman Career Expo, scheduled to take place from October 26 to November 6, 2020, will bring together employers and freshman students from high schools across the state for a chance to learn about career options from industry professionals. This pilot project, hosted by several regional intermediaries, will provide students with the opportunity to view employer sessions in career "booths" and hear from expert panelists who will connect the high school experience to their career aspirations.



## VIRTUAL 2020 DATA SUMMIT

This year's Data Summit includes a number of presentations made by representatives from the the Hawai'i Data eXchange Partnership, and due to the limitations imposed by COVID-19, the 2020 summit is being presented in a series of virtual webinars. This year's theme is Supporting Hawaii's Families through COVID-19 from Early Childhood into the Workforce. The first webinar, which took place in August, featured presenters from the early childhood sector and reached over 150 participants.

# YearEndReport 2019–2020

## THE FIRST EIGHT YEARS REPORT

The inaugural issue of the [First Eight Years Report](#) was released by Hawai'i P-20 in February 2020. This report highlighted the first cohort of Hawai'i's public pre-Kindergarten four-year old students who entered the program in school year 2014-2015. Hawai'i's public four-year old program prioritizes economically disadvantaged families and students or students with other at-risk criteria. This report showed:

- HIDOE schools that serve this population have the highest rates of economically disadvantaged students or serve communities with limited early learning opportunities;
- Students in this program are more likely to be economically disadvantaged, Native Hawaiian, or chronically absent; and
- Students from this cohort were more likely to meet or exceed standards on third grade standards-based assessments, compared to students who did not participate in this program.



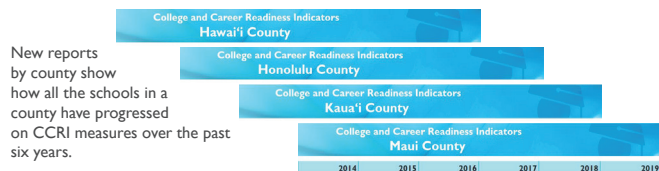
## WHAT'S NEW

On the College & Career Readiness Indicators Report  
Class of 2019 Update



Since 2009, the College & Career Readiness Indicators Report (CCRI) has examined the college and career readiness of Hawai'i State Department of Education (HIDOE) graduates. This report continues to evolve to provide information on how schools have progressed on key student outcomes. Data are essential for understanding trends and promoting equitable educational outcomes. Here are a few significant changes to the CCRI reports and dashboard for the Class of 2019.

### What's Happening in my County?



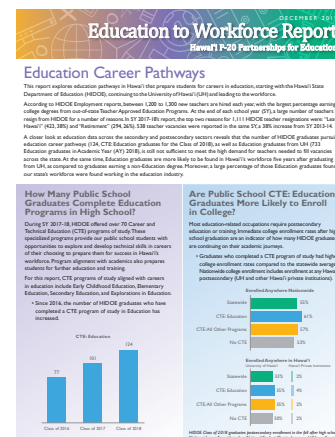
[http://hawaiiexp.org/research/ccri\\_reports](http://hawaiiexp.org/research/ccri_reports)

## COLLEGE AND CAREER INDICATORS REPORT: CLASS OF 2019

The College and Career Indicators Report (CCRI) was released in April 2020. This year Hawai'i P-20 also released county level reports to show how all schools in a county are progressing on [CCRI measures](#). For the first time, Hawai'i P-20 also reported on the number of Hawai'i State Department of Education graduates who earned the Seal of Biliteracy. The Seal of Biliteracy has been adopted by 40 states and Washington DC which encourages students to pursue developing multiple language skills. Since its introduction with the Class of 2017, the number of graduates attaining this honor has increased six-fold, from 37 to 246 for the Class of 2019. Graduates were awarded for skills attained in languages such as Tagalog, Ilocano, Spanish, Japanese, and Hawaiian.

## EDUCATION TO WORKFORCE REPORT FOCUSES ON TEACHING CAREER PATHWAY

The second edition of the [Education to Workforce](#) report was released in December 2019 and explored the teaching career pathway. The Hawai'i State Department of Education hires between 1,200-1,300 new teachers every year. This report documents the numbers of students who enter a Career Technical Education program of study and the number of teacher candidates that the University of Hawai'i graduates each year. Workforce data shows that teachers who earn teaching credentials here in state, likely to enter Hawai'i's workforce (81%) and continue in this career five years later (70%).



**HAWAII P-20**  
Partnerships for Education  
Spark. Transform. Excel.

## HAWAII P-20 PARTNERSHIPS FOR EDUCATION

For more information: [www.hawaii20.org](http://www.hawaii20.org) • Phone: 808 956-5443 • Toll-Free: 1-866-808-4327  
Email: [p20hawaii@hawaii.edu](mailto:p20hawaii@hawaii.edu) • Twitter: [@hawaii20](https://twitter.com/hawaii20)