

An aerial photograph of a beach with turquoise waves crashing onto the shore, creating white foam. The image is split horizontally by a light blue band containing the title.

2023 ANNUAL REPORT



HAWAI'I P-20
Partnerships for Education

TABLE OF CONTENTS

- 1** P-20 Overview
- 2** Hawai'i Graduates for Hawai'i's Future
- 3** Large Federal Grant Boosts Early Education Efforts
- 4** Work-Based Learning Expands for High Schoolers Throughout the State
- 6** Regional Partnerships Help Students Achieve Success
- 7** Stay at Home, Grow Your Own Teacher Pathway Pilot Project
- 8** Promising College Enrollment Data for GEAR UP and Soar Higher Schools
- 9** Finish in a Flash
- 10** Mentors and Scholarships Help Freshmen Succeed
- 11** New Dashboard Shows Where Hawai'i High School Graduates Enroll
- 2023 Data Summit: Data to Action
- 12** New Format For College Going Report
- 13** Hawai'i P-20 Resources
- HICA Brief
- 14** Pathway Alignment Website (Pathways)
- 15** Dual Credit Students Continue to Thrive as Program Proves Successful
- 16** Stupski Foundation Supports P-20 Efforts
- 17** Upcoming Events



We envision a Hawai'i where students from all backgrounds across our state have equitable access to rigorous, clear, and meaningful educational pathways that empower them to meet their education and career goals.

P-20 OVERVIEW

Hawai'i P-20 is a statewide partnership led by the Executive Office on Early Learning, the Hawai'i State Department of Education, and the University of Hawai'i System that works to strengthen the education pipeline from early childhood through postsecondary education and training with data-informed decision making, advocacy, policy coordination and shared action. Our work is focused on high expectations and equitable access, so all students can thrive in school, career and life.



HAWAI‘I GRADUATES

►►►►► *for* ►►►►►

HAWAI'I'S FUTURE

STATE OF HAWAI‘I EDUCATION ATTAINMENT GOALS

HAWAI'I GRADUATES FOR HAWAI'I'S FUTURE: A NEW WAY FORWARD FOR HAWAI'I

In November of 2022, the Hawai'i P-20 Council approved a new goal for the state, [Hawai'i Graduates for Hawai'i's Future](#). This new goal represents a shift from our previous goal of 55 by '25 in that no longer are we exclusively concerned with academic achievement and attainment; we want to see educational progress that leads to students being able to find good jobs here in Hawai'i. This means a concerted effort to align educational programs with workforce needs and with economic development in mind. This commitment to alignment, achievement, and workforce and economic development is manifest both in the [University of Hawai'i's newly adopted Strategic Plan](#) as well as the [Hawai'i Board of Education's Strategic Plan](#).

On May 24, 2023, Hawaii P-20 hosted a convening where representatives from educational and philanthropic organizations came together to

introduce this goal to the broader education ecosystem. The webinar included David Lassner, University of Hawai'i President; Tammi Oyadomori-Chun, Hawai'i State Department of Education Deputy Superintendent; Yuuko Arikawa-Cross, Executive Office on Early Learning Director; Keala Peters, Chamber of Commerce Executive Vice-President; and Micah Kāne, Hawai'i Community Foundation Chief Executive Officer & President. Hawai'i P-20's Stephen Schatz facilitated a conversation that allowed each organization to share its perspective and commitments to the State of Hawai'i Education Attainment Goal and how it will help to shape the planning and implementation of programs in the future.



The full webinar can be viewed at:
https://Hawaiiip20.link/Hawaii_Attainment_Goal-video

LARGE FEDERAL GRANT BOOSTS EARLY EDUCATION EFFORTS

In January of 2023, Hawai'i P-20 Partnerships for Education was awarded a nearly \$20 million federal grant to strengthen the early childhood system by building upon existing federal, state, and local early learning and care investments. The Hawai'i Preschool Development Grant Birth through Five (PDG B-5) renewal grant from the U.S. Department of Health and Human Services will provide more than \$6.6 million annually for the next three years. This grant will support coordination and collaboration among the state's existing programs, improve program quality, expand access, invest in workforce, and maximize parental engagement in the early childhood mixed delivery system. The focus of the grant is to improve the equitable participation of children, particularly vulnerable, underserved, or unserved children and their families. This includes children who are dual language learners and children with or who are at risk for disabilities.

Hawai'i P-20 and the Executive Office on Early Learning (EOEL) have begun to coordinate and align the early childhood efforts of the Hawai'i State Department of Education (HIDOE), Department of Health (DOH), Department of Human Services (DHS), and the University of Hawai'i (UH). In its first year of the grant period, Hawai'i's PDG B-5 team will utilize grant funds to update the [2020 Statewide Early Childhood Needs Assessment](#) and build upon the 2018 PDG B-5 initial grant work. The team will also focus on:

- ▶ [Supporting the Early Childhood Excellence Equity Project](#) in developing an early childhood workforce compensation plan;
- ▶ Fostering an increased capacity for infant and toddler care;

- ▶ Investing in mental health support strategies to build capacity of the early childhood workforce to address social, emotional, and mental health needs of young children;
- ▶ Aligning with the early childhood efforts in each county to enhance family engagement and leadership opportunities; and
- ▶ Supporting effective and appropriate transition services into kindergarten.

The Hawai'i PDG B-5 team consists of representatives from Hawai'i P-20, EOEL, HIDOE, DOH, DHS, UH, and the Public Charter School Commission Office.

Learn more at:



University of Hawai'i News:

<https://www.Hawaii.edu/news/2023/01/10/Hawaii-p20-exec-office-on-early-learning-awarded-grant/>



2020 Statewide Early Childhood Needs Assessment:

<https://HawaiiP20.link/2020-Statewide-Early-Childhood-Needs-Assessment>



Early Childhood Excellence Equity Project:

<https://coe.Hawaii.edu/ece3/>

WORK-BASED LEARNING EXPANDS FOR HIGH SCHOOLERS THROUGHOUT THE STATE

Over the past three years, Hawai'i P-20 has provided resources and support for several work-based learning (WBL) intermediary organizations to expand work-based learning for young people. Each regional intermediary organization is increasing student participation in job shadowing, mock interviews, and internship opportunities. Since piloting WBL intermediary partnerships in 2018, these funding efforts have largely relied on philanthropic contributions, raising concerns about the sustainability of intermediaries and the work-based learning opportunities they provide. To date, WBL Intermediaries have been funded in partnership with Harold K.L. Castle Foundation, Kamehameha Schools, Hawai'i Workforce Funders Collaborative, and various Federal grants.

Recognizing the need for a long-term solution, Hawai'i P-20 has embarked on a new phase of WBL intermediary efforts with an aim to establish an infrastructure of predictable funding and effective data collection. These efforts will help to sustain WBL regional intermediaries and support the expansion to schools across the state.

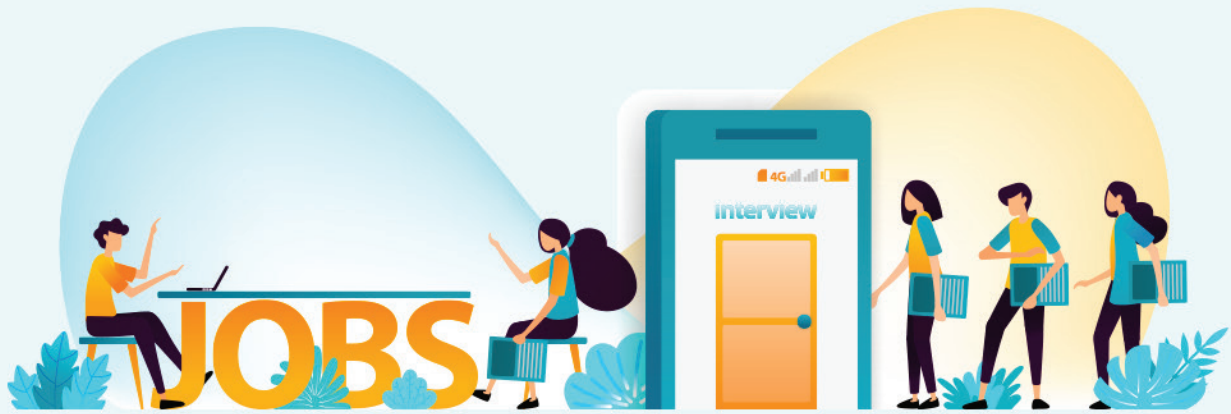
Hawai'i P-20 has partnered with multiple HIDOE Complex Areas and philanthropic partners for funding to ensure equitable access to at least one regional WBL intermediary for every HIDOE district. This funding is currently supporting WBL intermediaries in five of seven HIDOE districts (Honolulu, Windward, Central, Leeward, and Kaua'i). Hawai'i P-20 is currently engaged in efforts to identify WBL intermediaries for Maui County and Hawai'i Island.



Each WBL intermediary is working to achieve the following goals:

- ▶ Providing intermediary services to all HIDOE Complex Areas;
- ▶ Increasing the number of regional industry partners who offer WBL opportunities for HIDOE students;
- ▶ Developing a reliable system to capture and monitor WBL participation and completion data;
- ▶ Promoting equity in access to WBL opportunities;
- ▶ Creating a comprehensive WBL regional map.





The benefits of sustained partnerships between WBL Intermediaries and schools are:

▶ **Enhanced Access to Industry Professionals**

By supporting opportunities along the entire WBL continuum, students will have increased or expanded access to industry professionals which will empower them to make informed career decisions;

▶ **Insights into Labor Market Needs**

WBL intermediaries play a vital role in understanding the specific labor market demands in each region, with a focus on identifying credentials and skills that hold value. This knowledge is essential in aligning educational programs and WBL opportunities with workforce needs;

▶ **Collaborative Support for Meaningful WBL Opportunities**

Intermediaries act as partners and facilitators of relationships that allow schools and businesses to build meaningful and relevant WBL opportunities to help students understand the connection between classroom learning and real-world work experiences;

▶ **Strengthened WBL Data Management**

WBL intermediaries can support the effective collection of WBL data to better analyze and highlight the impact of WBL across Hawai'i.

By fostering partnerships and strategically planning for the future, we can empower Hawai'i's students to successfully begin and thrive in their careers. Together with partners and stakeholders, Hawai'i P-20 is looking to build a future where every student has access to meaningful work-based learning experiences and support for their success.

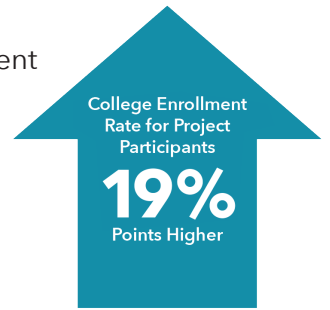


REGIONAL PARTNERSHIPS HELP STUDENTS ACHIEVE SUCCESS

Launched in 2020, the Pathways to Success program supported five high schools in five regions to design and launch six career pathways that will lead to high-demand, living wage careers in Hawaii. Schools were provided training and funding to offer academic and technical courses, accelerated learning opportunities such as Early College, work-based learning and student advising support to students that culminated in a degree or credential that corresponds to the needs of the job market. As Pathways to Success enters its final year, Hawai'i P-20 will be scaling successful elements of the program to impact even more students in more schools across the state.

Year 3 Program Highlights:

In 2022, the college enrollment rate for project participants was **19 percentage points higher** compared to their classmates (63% vs. 44%);

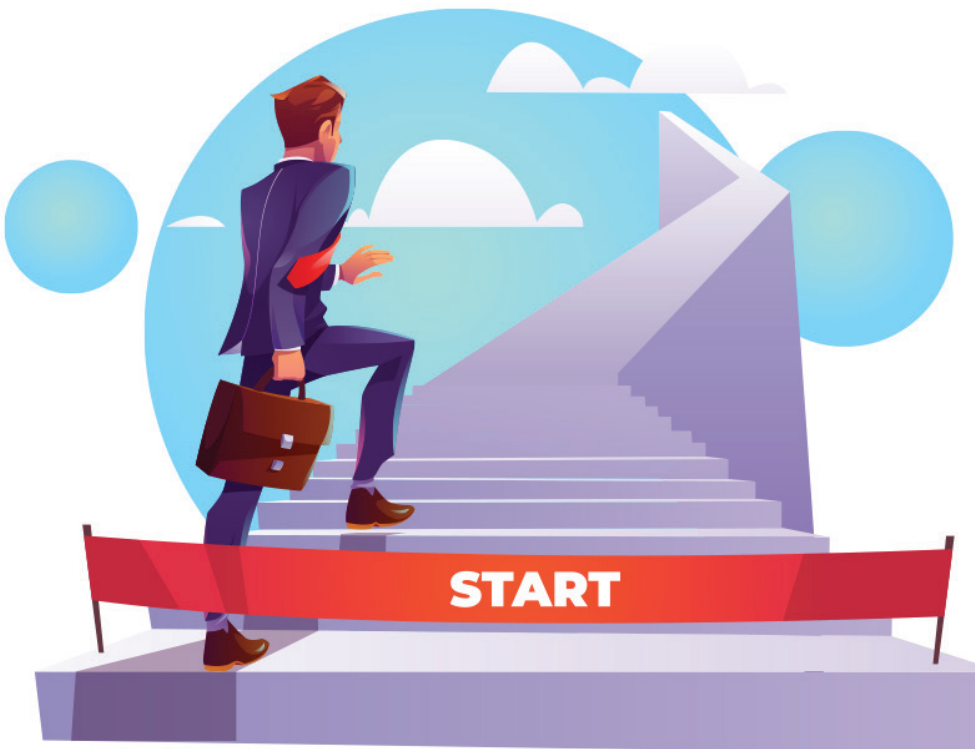


The project has surpassed its target for the number of students served each year;

There has been an increase in the percentage of underrepresented populations benefitting from the program;

School staff and students have consistently confirmed the value added by the program;

Most students were supported in multiple and complementary ways, such as academic support, WBL opportunities, and counseling sessions.



STAY AT HOME, GROW YOUR OWN TEACHER PATHWAY PILOT PROJECT

The Stay at Home, Grow Your Own Teacher Pathway pilot project was collaboratively developed to address one of the biggest challenges facing Hawai'i's educational system today: high teacher vacancy rates on the neighbor islands, especially in the most rural schools, and schools with the highest poverty rates among students. A partnership between Hawai'i P-20, Leeward Community College, and the University of Hawai'i - West O'ahu, with the support of the University of Hawai'i at Mānoa, collaboratively developed this pilot program to directly address this problem by working toward a goal of supporting students as they pursue licensure to become highly-qualified educators in the state of Hawai'i. The first cohort of high school juniors will begin their journey this school year.

The project will begin with a cohort of students in their junior year of high school and they will remain supported throughout their time in the program as they matriculate to Leeward CC and then UH West Oahu. Students will be able to remain on their home island, take courses online, and eventually achieve their teaching degree from UH West Oahu. Students will acquire valuable and transferable skills in high school through early college courses as they foster a lifelong commitment to educational equity rooted in celebration and pride for the community in which they live and will eventually work.



The Stay at Home, Grow Your Own Teacher Pathway pilot project aims to increase the number of students who successfully complete the teacher preparation program, and increase teacher retention and tenure through this unique on-ramp to the profession that provides the opportunity to learn, practice, and work in their home communities. The cohort of students will also be given training and opportunities to collaborate, build a network, and support each other throughout the process as they help students and their communities grow and thrive.



PROMISING COLLEGE ENROLLMENT DATA FOR GEAR UP AND SOAR HIGHER SCHOOLS



GEAR UP Hawai'i and Hawai'i P-20 have continued to support college enrollment by working with select school teams to establish programs that support students as they transition from middle

school, to high school, and to college on their way toward a career.

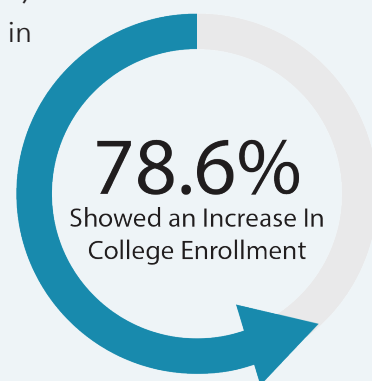
Beginning in 2018, **10 school teams** were established and were comprised of school staff members at selected high schools, their feeder middle schools, and nearby postsecondary campuses to help students transition between each institution and be supported as they work toward their career goals. Due to the success of the initial teams, additional support from the Harold K.L. Castle Foundation enabled the creation of four additional teams during the COVID-19 pandemic in 2020.

Since the end of the pandemic, data has shown that college enrollment at these schools

recovered quicker than schools that did not have these coordinated programs. Between 2020 and 2022, college enrollment at schools with these transition support programs showed a **3.2% increase in college enrollment** compared to a 0.4% decrease at high schools without them.

Eleven of the 14 high schools with Hawaii P-20 support (78.6%)

showed an increase in college enrollment between 2020 and 2022. Among the rest of the state, only 13 out of 27 high schools (48.1%) showed a college enrollment increase during that same time period.



While these results are encouraging, more work will need to be done to support schools to return to pre-pandemic levels of college enrollment. GEAR UP Hawai'i and Hawai'i P-20 are excited to continue these partnerships to provide relevant and responsive programs to better meet the evolving needs of all students.

FINISH IN A FLASH



In partnership with the UHCCs, Ke Ala Naʻauao (KAN) mentors implemented its first onboarding campaign, Finish in a Flash. This campaign aimed to support graduating seniors in completing their enrollment steps to college in early May. This included helping students with setting up their UH usernames, uploading health documentation, and assisting them with placement and new student orientation appointments. KAN mentors also offered assistance to those who wished to complete the Free Application for Federal Student Aid (FAFSA) process. In its first year, KAN mentors piloted this campaign with four GEAR UP high schools and partnered with Honolulu CC, UH - West Oʻahu, and Windward CC so they could assist students with any specific campus-related questions.

Throughout the 2023-2024 school year, KAN mentors will expand Finish in a Flash into a series of campaigns designed to support seniors throughout the entire college application process. The Gear Up and Go, Finish in a Flash, and Reg Fest campaigns will aim to help students complete the following tasks before their high school graduations:

- ▶ Completing and submitting an application to a UH campus;
- ▶ Setting up a Federal Student Aid ID;
- ▶ Completing the FAFSA;
- ▶ Onboarding procedures at their chosen UH campus.

By offering their support through these campaigns, KAN mentors aim to empower students and ease their transition from high school to college.



MENTORS AND SCHOLARSHIPS HELP FRESHMEN SUCCEED



The Ke Ala Na'auao (KAN) first-year program serves graduating Hawai'i high school seniors as they transition into the UH System. The program connects students with mentors who conduct regular check-ins and provide support to new students. This year, KAN mentors were also assigned to recipients of the new Ka Mo'omeheu Kulanui scholarship, which is designed to support a student's college journey through their first two years at a UHCC. Translated to "College, Footsteps, Journey," the scholarship was awarded to Class of 2023 seniors who will be attending a UHCC campus. Recipients were awarded a \$5,500 scholarship for their first year and the scholarship is renewable into the second year. KAN mentors will continue to assist scholarship recipients in their second year of college, offering guidance for the transition into the workforce and/or further education as they progress toward completing their first degree. In addition, KMK scholars will be working with their alumni schools to talk about their college experience with current middle and high school students.

In the 2022-2023 school year, KAN mentors also partnered with different GEAR UP schools to conduct outreach campaigns promoting college awareness. They actively participated in college and career fairs, delivered classroom presentations, shared stories about their personal college journeys, and facilitated activities to inspire student aspirations and build awareness about college access. In the 2023-2024 school year, KAN mentors are expanding these engagement activities to more schools and broadening the presentation topics to include career exploration, social networking and financial literacy. A mentor guidebook is in current development for any mentors who do outreach work with middle schools and high schools.

If GEAR UP schools are interested in scheduling KAN mentors as guest speakers, please visit <https://Hawaiiip20.link/KAN-mentor-outreach>.



NEW DASHBOARD SHOWS WHERE HAWAI'I HIGH SCHOOL GRADUATES ENROLL



Hawai'i DXP and Hawai'i P-20 have announced the completion of the First Fall College Enrollment Dashboard. This dashboard focuses on college access rate disaggregation including: demographic breakouts, accelerated learning (i.e., dual credit and Advanced Placement (AP), ACT and state assessment scores, GPA, and economic disadvantaged status. Viewable at both the state and complex area levels, this powerful resource offers valuable data insights that can help schools, educators, and education partners to better understand college access across the state.

Visit the dashboard at <https://www.Hawaiidxp.org/data-products/high-school-completers-fall-enrollment-locations/>

2023 DATA SUMMIT: DATA TO ACTION



The successful 2023 Data Summit: Data to Action was held virtually throughout October with 371 participants and featured sessions on the following topics:

Hawai'i Graduates for Hawai'i's Future - An overview of sector-specific equity goals and the metrics that will track students' progress toward these goals.

Publicly Available Hawai'i DXP Data - Where to Find Them and How to Use Them

Early childhood education workforce data that exists and the need to expand our data sets in order to make informed decisions to serve the children of Hawai'i.

K-12 - Moving the Needle: Effective Uses of Data in Evolving and Growing Hawai'i's Early College Program

Postsecondary - UHCC: Using Data to Help Meet Statewide Workforce Needs

How Sector Partnerships Have Utilized Labor Market and Employer Qualitative Data for Decision Making and Employer Engagement

Mathematics Achievement through Hawai'i's Education Pipeline - Examine how to address persistent inequities in mathematics performance.

These sessions were presented by representatives from Hawai'i State Department of Education, University of Hawai'i, and workforce development organizations. Detailed descriptions of the sessions, speakers biographies and recording of the sessions are available at <https://www.hawaiidxp.org/events/2023-data-summit-series/#ec>.

NEW FORMAT FOR COLLEGE GOING REPORT

The College and Career Readiness Indicators (CCRI) is an annual report that has been an important tool for schools, Complex Areas, counties, and the state to visualize trends across a variety of measures of educational progress. With the launch of a revised summary report format this year, the CCRI data enables education stakeholders to more easily view data at multiple levels which will better support decision-making across the state. These reports also include five-year trend lines that provide a longitudinal view of HIDOE graduates' college and career readiness.

Discover the new CCRI format at <https://www.Hawaiiidxp.org/ccri-summary-reports/>

College and Career Readiness Indicators Statewide

	2018	2019	Class of: 2020	2021	2022
HIGH SCHOOL OUTCOMES					
High School Completers	11,370	10,853	11,458	11,333	11,271
Diploma With Any Honors	28%	32%	29%	32%	32%
Academic Honors	23%	26%	24%	25%	24%
CTE Honors	12%	15%	15%	17%	19%
STEM Honors	3%	4%	3%	4%	4%
Seal of Biliteracy	1%	2%	3%	4%	4%
On-time Graduation Rate	84%	85%	86%	86%	85%
ASSESSMENTS					
English Language Arts (SBA)	58%	61%	60%	*	65%
Mathematics (SBA)	32%	33%	31%	*	28%
Science (Biology 1)	35%	38%	36%	37%	*
ACT Exam Taken	9,806 (86%)	8,670 (80%)	9,451 (82%)	8,881 (78%)	6,875 (61%)
ACT College Ready: English \geq 18	41%	38%	35%	37%	41%
ACT College Ready: Math \geq 22	22%	23%	18%	19%	21%
ACT College Ready: Science \geq 23	17%	20%	18%	21%	22%
ACCELERATED LEARNING					
Dual Credit Participation	2,015 (18%)	2,390 (22%)	2,495 (22%)	2,625 (23%)	2,473 (22%)
Earned 6+ Dual Credits	1,046 (9%)	1,369 (13%)	1,475 (13%)	1,675 (15%)	1,581 (14%)
Advanced Placement (AP) Exam Taken	3,928 (35%)	3,999 (37%)	3,717 (32%)	3,408 (30%)	3,255 (29%)
Scored 3+ on an AP Exam	1,615 (10%)	1,857 (13%)	1,881 (15%)	1,790 (16%)	1,691 (16%)

HAWAI'I P-20 RESOURCES

Hawai'i P-20 Tools and Resources -

<https://www.hawaiip20.org/resources/>



Students and Families 



Educators



Partners



Counselors

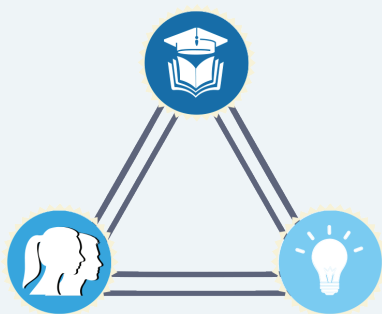


Administrators



Education Data 

HICA BRIEF (PATHWAYS)

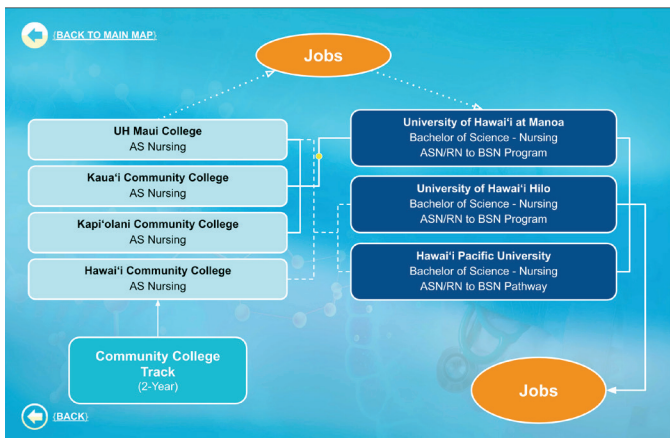
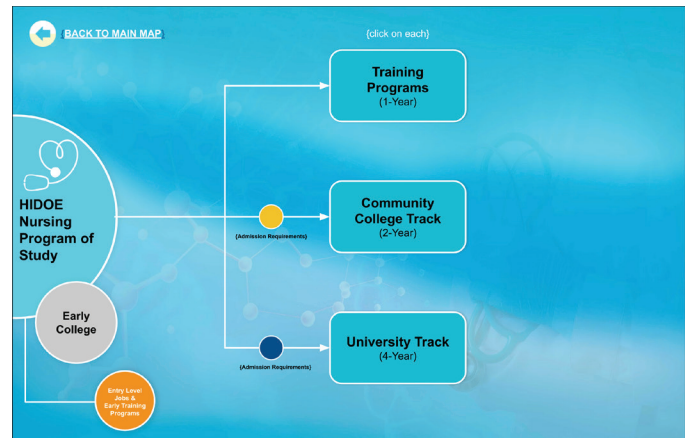
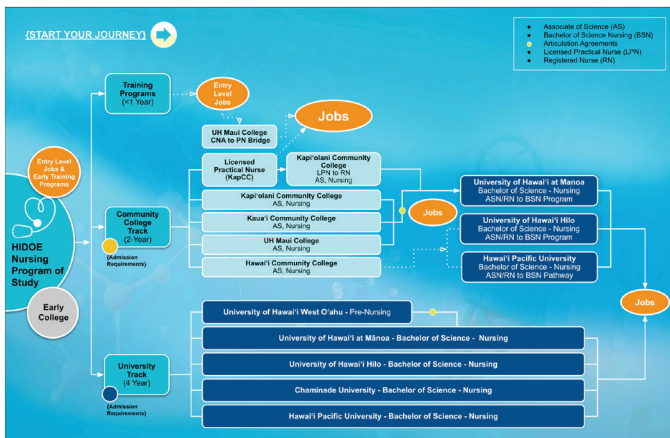


In Spring 2023, Hawai'i P-20 unveiled the [Hawai'i Counseling and Advising \(HICA\) Issue Brief \(PDF\)](#), a comprehensive summary of counseling and advising efforts in the HIDOE. The brief emphasizes counseling and advising as critical for students to achieve their college and career goals, drawing from five years of Hawai'i P-20 project data, statewide counselor survey responses, and national best practices. The HICA Issue Brief includes chapters on pandemic learnings and policy recommendations to ensure meaningful postsecondary education, training, and career opportunities for all Hawai'i students.

PATHWAY ALIGNMENT WEBSITE (PATHWAYS)

<https://hawaiicareerpathways.org>

The new Hawai'i Career Pathways website introduces two Hawai'i Career Pathways Maps: Healthcare and Information Technology, with Education and Agriculture, Food, & Natural Resources pathway maps in development and coming soon.



These maps align the HIDOE pathways and programs of study with those offered in the UH System to employment opportunities in Hawai'i. This resource also provides information on the various postsecondary options in the state including workforce training, and community college and university programs. Users can explore details such as prerequisites, admission requirements, aligned Early College opportunities, program requirements, cost, transfer options, and associated job prospects.

DUAL CREDIT STUDENTS CONTINUE TO THRIVE AS PROGRAM PROVES SUCCESSFUL

<https://www.hawaiidxp.org/data-products/dual-credit-data-story/>

Hawai'i P-20 has updated the Dual Credit Data Story up to the Class of 2022. This data story provides a short history of the statewide expansion of dual credit opportunities for HIDOE students, who the program serves, and the outcomes of students who have participated in dual credit.

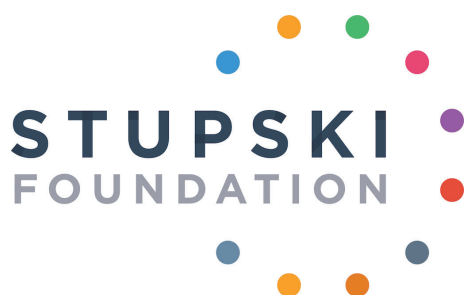
Highlights include:

- ▶ Dual credit participation has increased from **10%** of the completers from the Class of 2015 to **22%** for the Class of 2022;
- ▶ **75%** of the dual credit graduates from the Class of 2022 enrolled in college compared to **44%** of their peers who did not participate in dual credit;
- ▶ Additionally, dual credit students are more likely to complete college within six years of high school than their college going non-dual credit peers (**57%** compared to **31%**);
- ▶ Females are twice as likely to take dual credit compared to males;
- ▶ While economically disadvantaged students' participation has increased over three percentage points since SY1415, there continues to be a persistent gap with more non-economically disadvantaged students participating in dual credit;
- ▶ All **10 University of Hawai'i campuses** serve dual credit students; and
- ▶ In the 2021-2022 school year, **367** unique University of Hawai'i dual credit courses were offered.

Hawai'i P-20 Partnerships for Education, UH, and HIDOE annually evaluates the results of the state's dual credit program. The data highlighted in this story continuously informs recruitment strategies and support services that are needed to ensure all students benefit from equitable access and success to dual credit programs.



STUPSKI FOUNDATION SUPPORTS P-20 EFFORTS



In October 2023, Hawai'i P-20 Partnerships for Education was honored to be selected as the recipient of the \$4 million grant from the Stupski Foundation. This significant grant will provide vital support to Hawai'i P-20's ongoing efforts and its new and innovative ideas aimed at helping more underrepresented students attend college. The selection of Hawai'i P-20 for this grant recognizes its dedication and track record in making a positive impact on education in the state.

Associate Director of Hawai'i P-20 Angela Jackson said, "Receiving this grant is a testament to the hard work and dedication of everyone at Hawai'i P-20 and our various partners in striving to create equal opportunities for all students, regardless of their background. In particular, we are committed to making the process of DOE students applying to college at UH much easier and more seamless."

The Stupski Foundation supports organizations that demonstrate a strong commitment to the success of advancing educational opportunities. Cheri Souza, the Hawai'i Postsecondary Success Program Officer from the Stupski Foundation, expressed her enthusiasm for this multi-year partnership with Hawai'i P-20, remarking, "Hawai'i P-20's impact and data-driven approach align with our mission to create transformative systems change in education. We are confident that this grant will further amplify their efforts and create more opportunities for Hawai'i's young people to thrive in the communities they call home."

With support from this grant, Hawai'i P-20 will continue its work in bringing partners and stakeholders together to build a more aligned, inclusive, and equitable education system, ensuring that all students have access to the resources and opportunities they need to thrive and impact communities across the state.



UPCOMING EVENTS

For Students and Families:

- ▶ **Statewide Virtual FAFSA Completion Events**

January 17, January 24, January 31, February 7, February 14, February 21, February 28, March 6, March 13, March 27, April 3, April 10, April 17, April 24

Registration link: <https://hawaiiip20.link/Spring-2024-FAFSA-Completion>

For Educators and Community Partners:

- ▶ **2024 Hawai'i Early College Convening**

February 9, 2024

(This event will be held virtually)

- ▶ **2024 Hawai'i Counseling & Advising Convening**

March 12, 2024

Ala Moana Hotel, Honolulu





An equal opportunity/affirmative action institution